

# ISIS CAPTURES RAMADI

MAY 18, 2015

BY PATRICK MARTIN, GENEVIEVE CASAGRANDE, JESSICA LEWIS MCFATE,  
AND THE ISW IRAQ AND SYRIA TEAMS

INSTITUTE FOR THE STUDY OF WAR

[WWW.UNDERSTANDINGWAR.ORG](http://WWW.UNDERSTANDINGWAR.ORG)

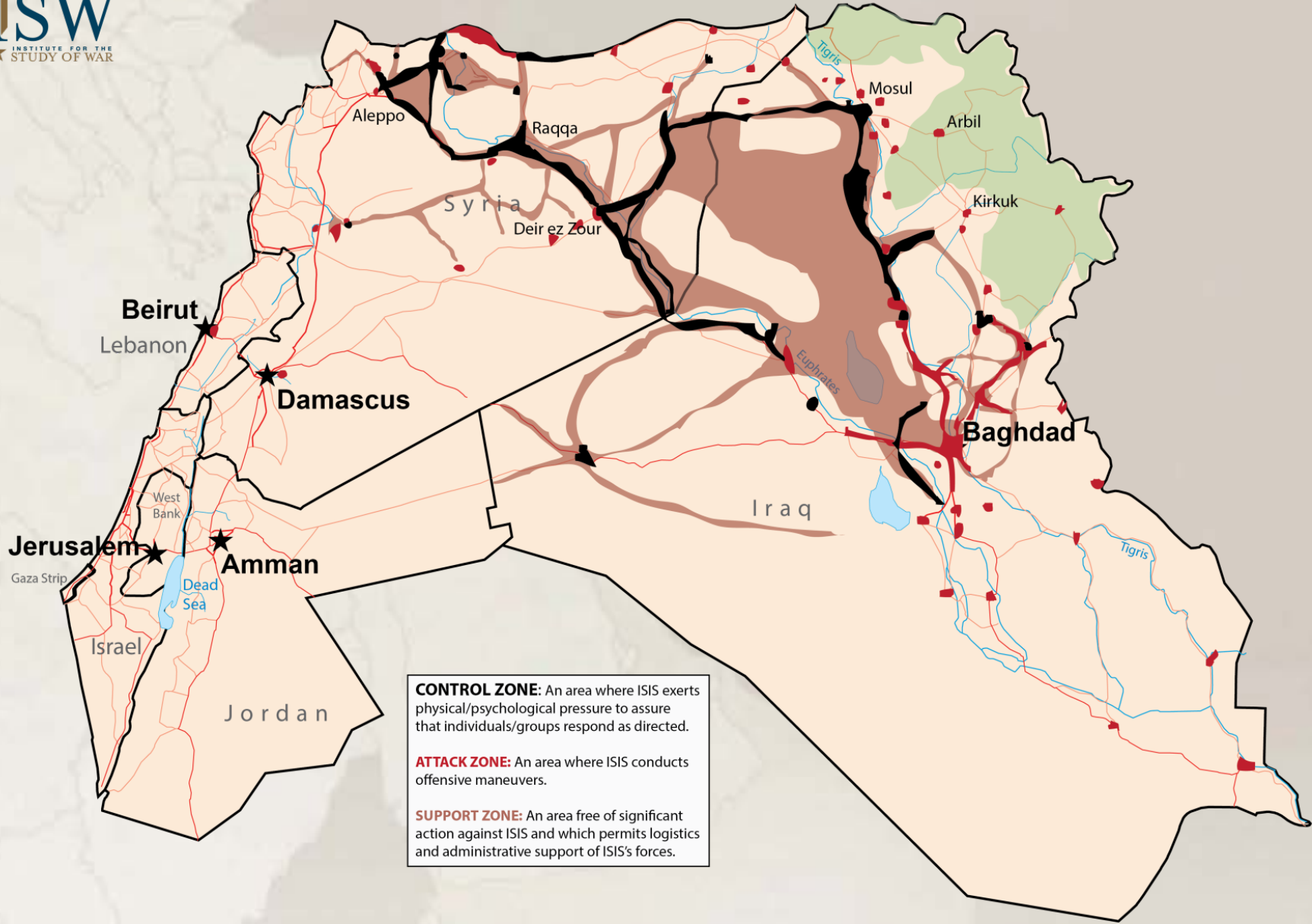


## ISIS ATTACKS RAMADI & SEIZES FALLUJAH, 3 JAN 2014



THE ABOVE PHOTO DEPICTS AN EARLIER HARBINGER OF ISIS'S INTENT FOR RAMADI, WHEN ISIS APPEARED PUBLICALLY WITHIN RAMADI'S ANTI-GOVERNMENT PROTEST ON OCTOBER 28, 2013. ISIS LAUNCHED SIMULTANEOUS ATTACKS UPON RAMADI AND FALLUJAH ON JANUARY 3, 2014, SEIZING MUNICIPAL BUILDINGS AND POLICE HEADQUARTERS. ISIS CAPTURED FALLUJAH, WHICH IT STILL CONTROLS IN MAY 2015. THE ISF WITH LOCAL TRIBES DROVE ISIS FROM THE CITY CENTER IN RAMADI IN JANUARY 2014. ISIS HAS BEEN CONTESTING THE ISF'S CONTROL OF RAMADI SINCE THEN.

# ISIS SANCTUARY AUGUST 8, 2014



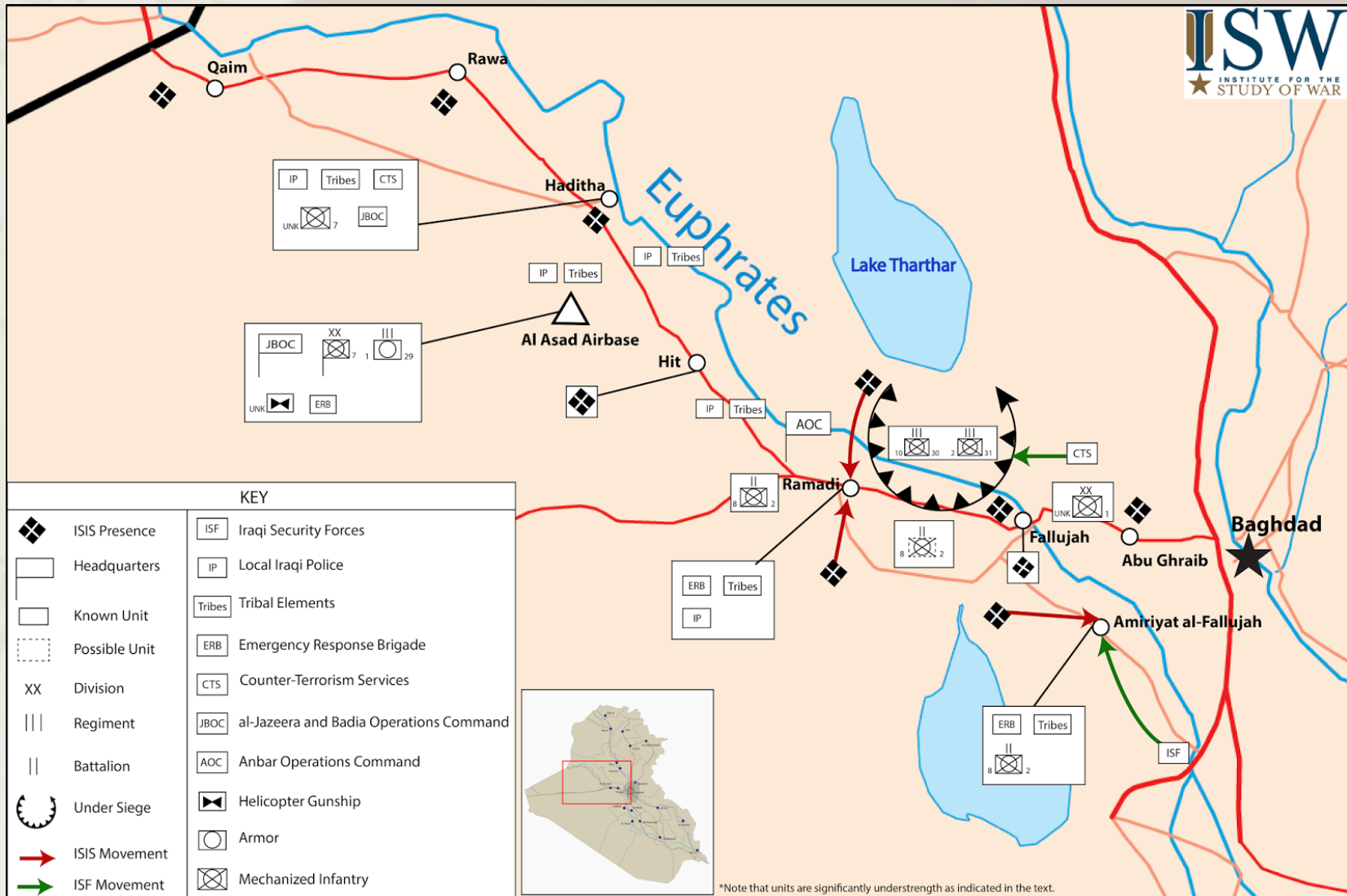
**CONTROL ZONE:** An area where ISIS exerts physical/psychological pressure to assure that individuals/groups respond as directed.

**ATTACK ZONE:** An area where ISIS conducts offensive maneuvers.

**SUPPORT ZONE:** An area free of significant action against ISIS and which permits logistics and administrative support of ISIS's forces.

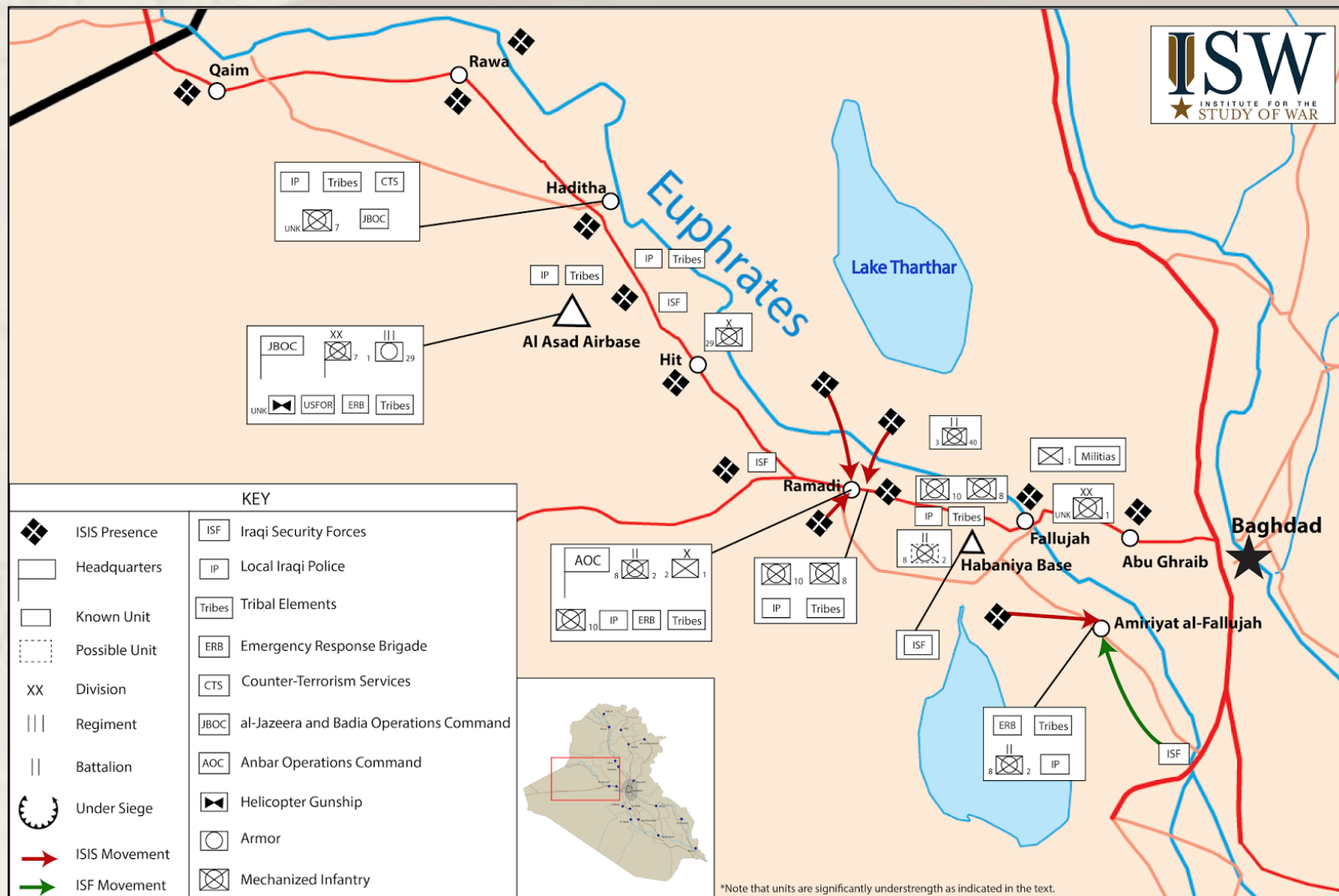
ISIS HAS BEEN ATTEMPTING TO CONTROL ALL OF ANBAR SINCE THE FALL OF MOSUL IN JUNE 2014. ISIS DID NOT SUCCEED IN CAPTURING HADITHA, AL-ASAD AIRBASE, OR RAMADI IN 2014. THE FALL OF RAMADI MAKES THE REMAINING ISF POSITIONS VULNERABLE.

# ASSESSED ISIS AND ISF POSITIONS IN ANBAR IN OCT. 2014



ISIS HAS TRIED TO CAPTURE RAMADI AS PART OF A STRATEGY TO TAKE ALL OF ANBAR. IN OCTOBER 2014, ISIS CAPTURED THE CITY OF HIT TO THE WEST. IRAQI ARMY (IA) UNITS LARGELY WITHDREW TO DEFENSIVE POSITIONS AT THAT TIME, LEAVING DEFENSE OF URBAN AREAS TO LOCAL IRAQI POLICE AND PRO-GOVERNMENT SUNNI TRIBES. IN RAMADI, LOCAL TRIBAL AND POLICE UNITS WERE ABLE TO RESIST ISIS'S ATTACKS DESPITE THE WITHDRAWAL OF IA UNITS TO THE ANBAR OPERATIONS COMMAND (AOC) HEADQUARTERS ON THE NORTHERN EDGE OF THE CITY ON OCTOBER 5.

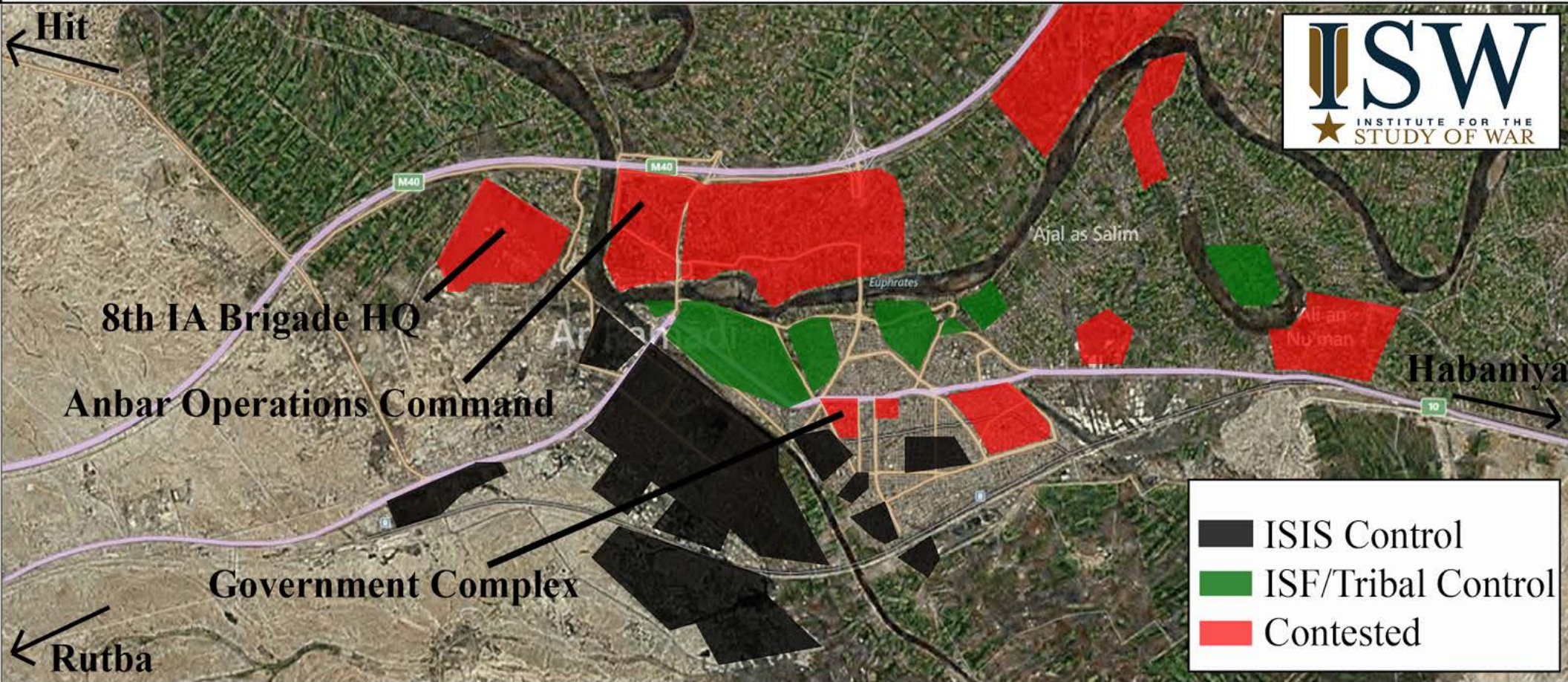
# ISIS AND ISF POSITIONS IN ANBAR IN DEC. 2014



**DECEMBER 2014: ISIS CONDUCTED SIMULTANEOUS OFFENSIVES AGAINST ISF ELEMENTS IN ANBAR PROVINCE, LAUNCHING ATTACKS ON HADITHA, RAMADI, AND AREAS CLOSE TO AL-ASAD AIRBASE, INCLUDING HIT AND AL-BAGHDADI IN PREPARATION FOR A WIDE-SCALE GROUND OFFENSIVE AGAINST RAMADI. ISIS LIKELY ATTACKED NEAR AL-ASAD TO FIX ISF FORCES THERE. THEY WOULD HAVE BEEN THE PRIMARY SOURCE OF REINFORCEMENTS TO RAMADI, ILLUSTRATING ISIS'S OPERATIONAL DESIGN.**

# ISIS ATTACKS RAMADI'S CITY CENTER IN DEC. 2014

## CONTROL MAP OF RAMADI, DECEMBER 23, 2014



ISIS LAUNCHED A SERIES OF ATTACKS AGAINST THE ANBAR OPERATIONS COMMAND (AOC) HEADQUARTERS, THE 8TH IRAQI ARMY BRIGADE HEADQUARTERS, AND THE GOVERNMENT COMPLEX IN THE CITY OF RAMADI, FOLLOWING THE SEIZURE OF NEARBY NEIGHBORHOODS IN NOVEMBER 2014. HOWEVER, IRAQI SECURITY FORCES HAVE LARGELY HELD THE CITY'S PRIMARY DEFENSES, MAINTAINING CRITICAL GROUND LINES OF COMMUNICATION INTO THE CITY'S CENTER.

# ISIS'S ATTACKS THROUGHOUT IRAQ BEFORE RAMADI'S FALL



## LEAD UP TO THE FALL OF RAMADI

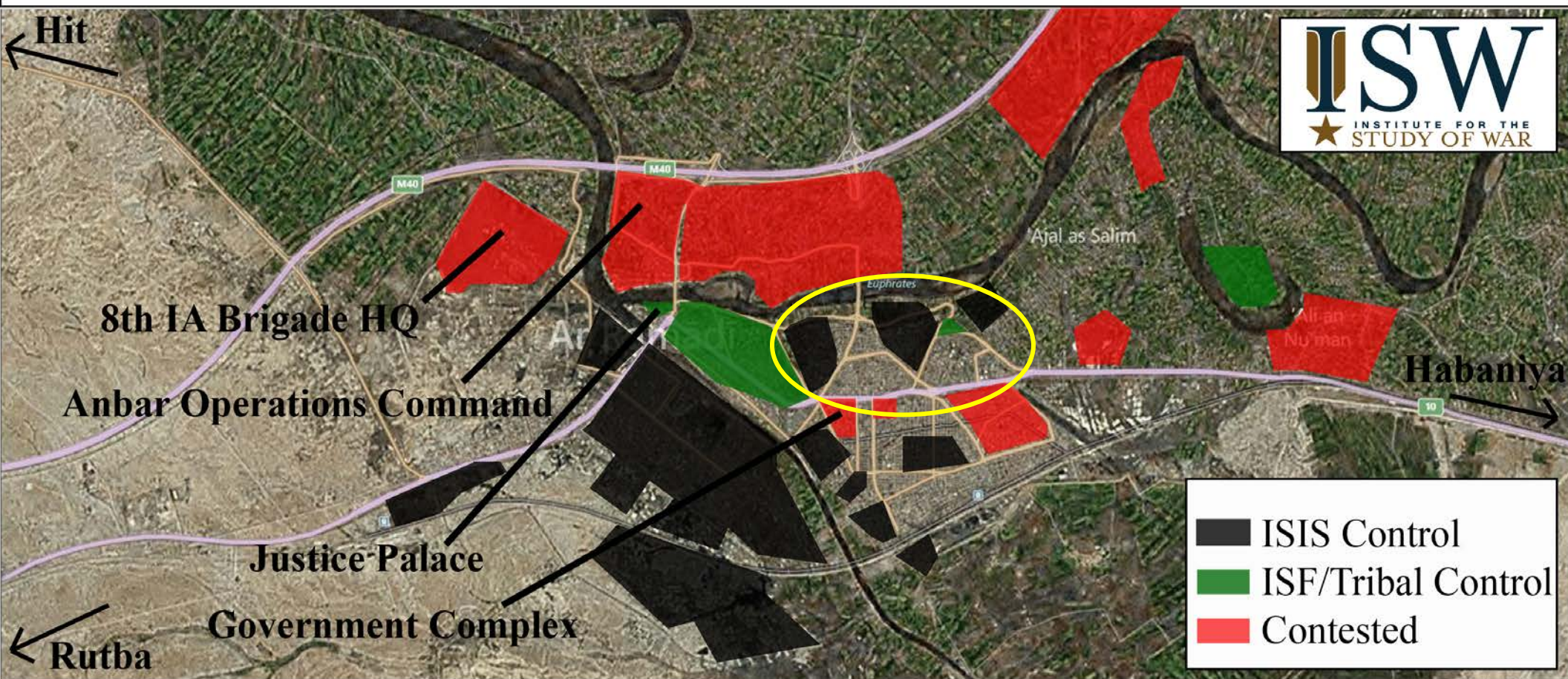


- ① 2 MAY: Main attack by ISIS against the Baiji Oil Refinery
- ② 2 MAY: ISIS attacks Nukhaib
- ③ 4 MAY: ISIS attacks south of Balad
- ④ 5 MAY: Shaping attacks IVO Ramadi
- ⑤ 7 MAY: Main attack by ISIS against the Baiji Oil Refinery
- ⑥ 7 MAY: VBIED wave in Baquba and Baghdad
- ⑦ 8 MAY: ISIS attacks Habaniya
- ⑧ 9 MAY: Probing attacks IVO Ramadi
- ⑨ 9 MAY: Prisoners likely affiliated with ISIS break out of the Khalis prison
- ⑩ 12 MAY: VBIED cluster in Baghdad
- ⑪ 15 MAY: Main attack by ISIS in Ramadi
- ⑫ 15 MAY: ISIS attacks and seizes Jubba near al-Asad airbase
- ⑬ 15 MAY: ISIS conducts several attacks between Baghdad and Samarra

ISIS's operational design in early 2015 reflected two strategic priorities: Ramadi and the Baiji Oil Refinery. ISIS attacked both of them simultaneously on multiple occasions including in mid-April. Beginning in May 2015, ISIS began to offset its attacks, focusing upon Baiji first, and then Ramadi. ISIS also conducted numerous shaping and diversionary attacks in the vicinity of these targets and also on other fronts. ISIS's strategy to consolidate its control of terrain, part of its defense, includes deliberate efforts not only to prevent the ISF from massing on one front, but also to divert them in different directions to allow ISIS to make advances even while under fire.

# RAMADI BEGINS TO FALLS TO ISIS ON MAY 15, 2015

## CONTROL MAP OF RAMADI, MAY 15, 2015

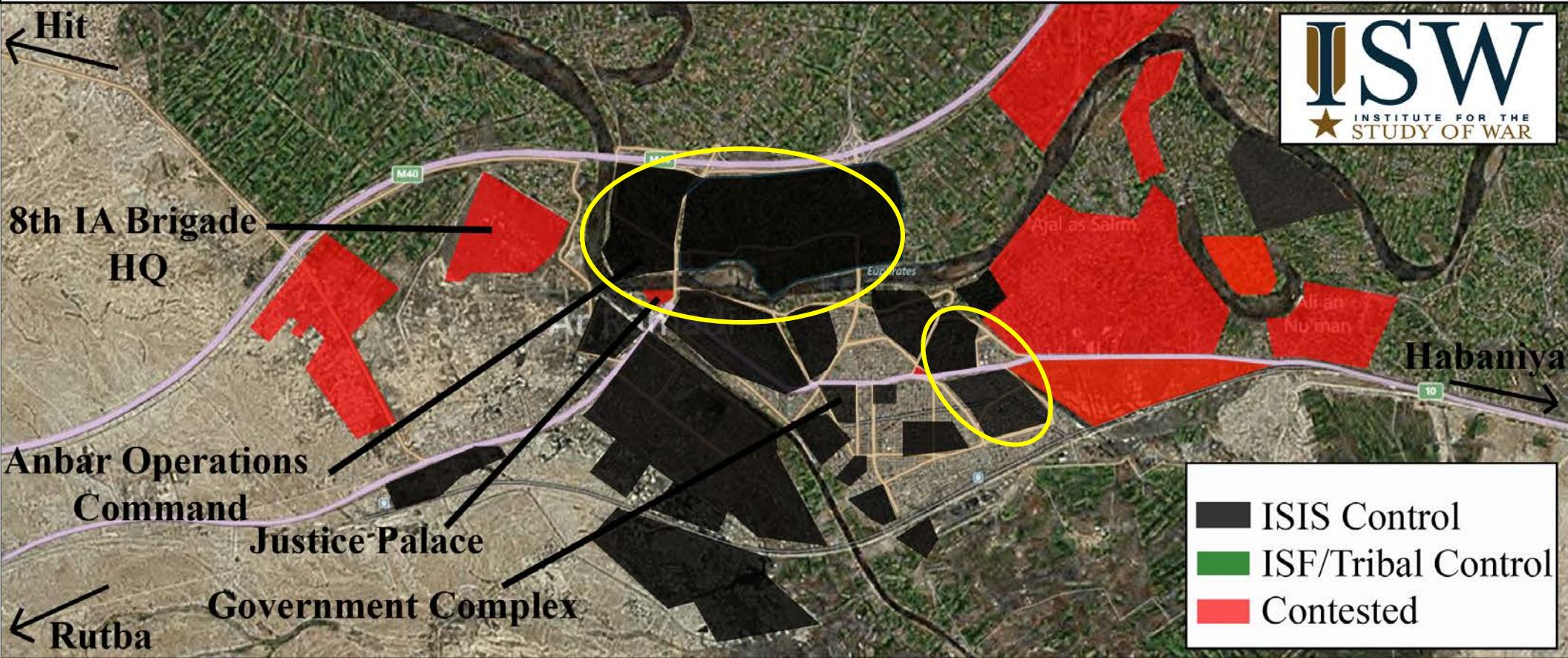


ISIS RESUMED OPERATIONS TO TAKE RAMADI IN MID-APRIL. IT ATTACKED RAMADI ON APRIL 10 AND 14, AND PROBED IT AGAIN ON MAY 5 AND 9. ON MAY 15, 2015 ISIS LAUNCHED A MAJOR ATTACK IN CENTRAL RAMADI TARGETING THE GOVERNMENT COMPLEX AND ANBAR OPERATIONS COMMAND (AOC), BOTH ARE FOCAL AND HIGHLY SYMBOLIC POINTS IN THE CITY THAT WITHSTOOD NUMEROUS ATTACKS SINCE JANUARY 2014. ISIS BEGAN THE ATTACK BY SEIZING NEIGHBORHOODS BETWEEN THE TWO FACILITIES, CIRCLED ABOVE. THE SPOKESPERSON OF THE GOVERNOR OF ANBAR STATED THAT RAMADI FELL TO ISIS ON MAY 17, 2015.



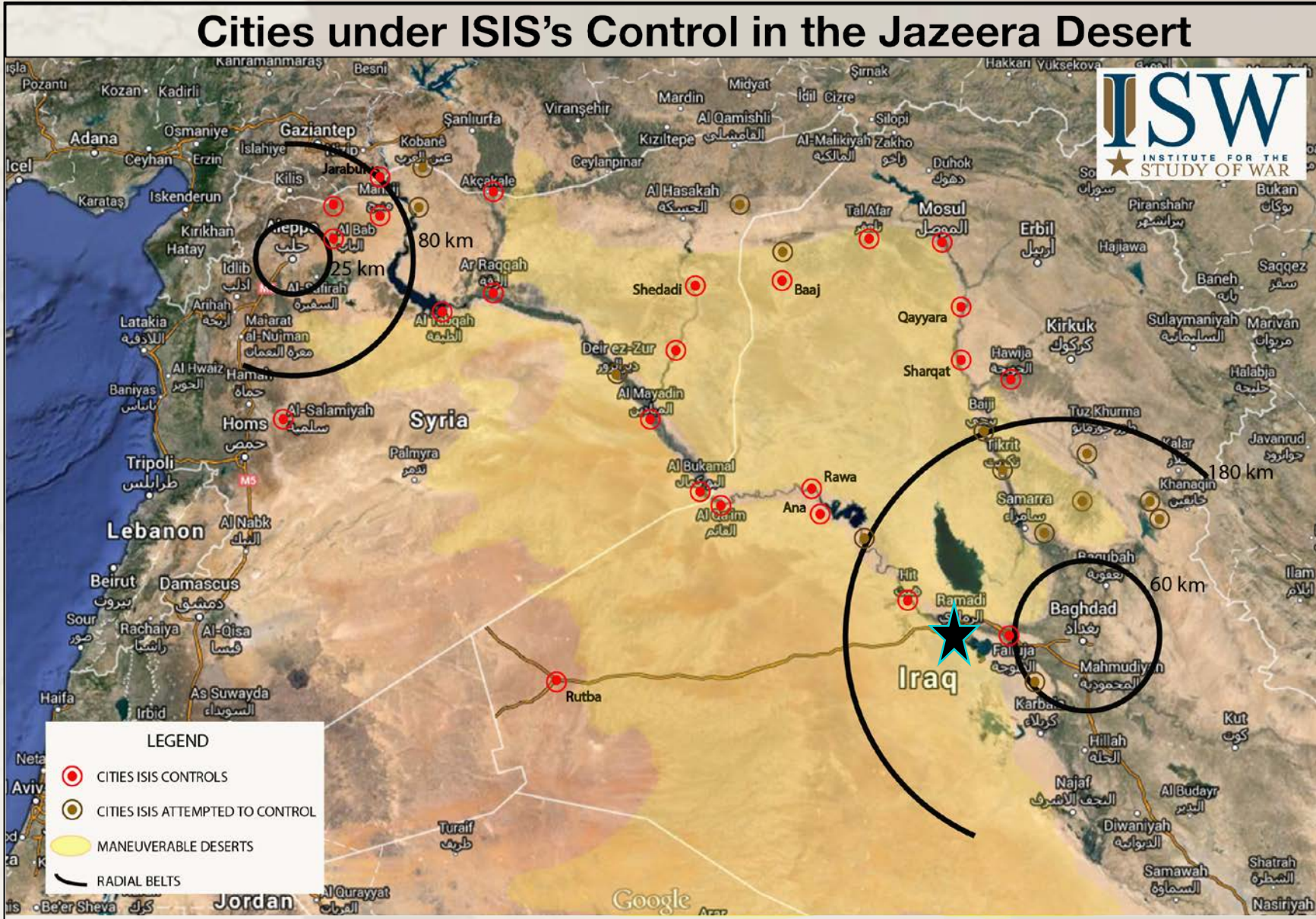
# RAMADI STATUS UPDATE FOR MAY 18, 2015

## CONTROL MAP OF RAMADI, MAY 18, 2015



ON MAY 18, IA AVIATION EVACUATED ISF MEMBERS FROM AL-MALAB NEIGHBORHOOD IN SOUTHWESTERN RAMADI, INDICATING THAT THE NEIGHBORHOOD FELL TO ISIS. MEANWHILE, ISIS IS REPORTEDLY BESIEGING IP MEMBERS AT THE JUSTICE PALACE.

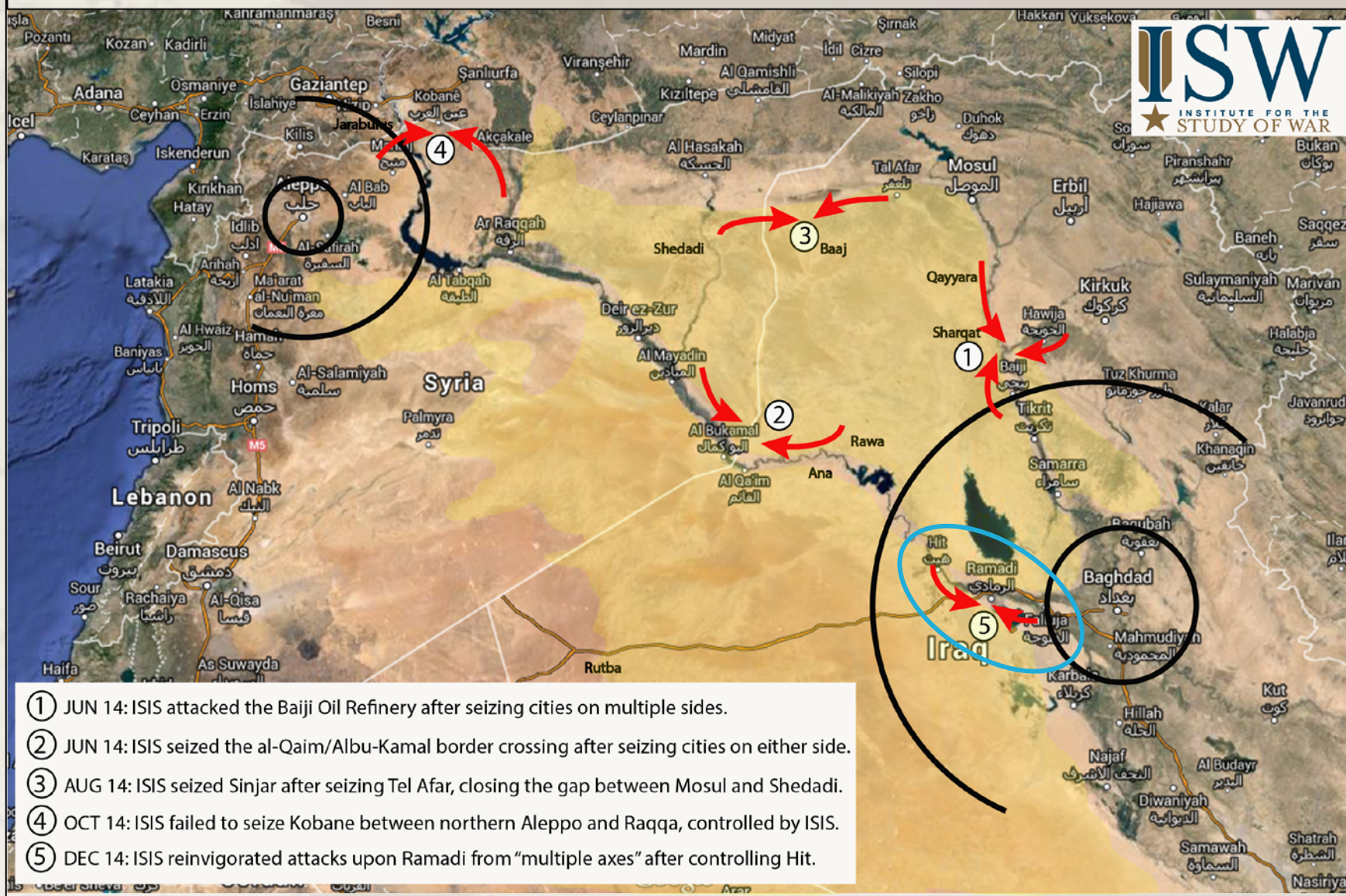
# RAMADI IN CONTEXT OF ISIS'S BATTLE PLAN



ISIS RELIES ON FREEDOM OF MOVEMENT THROUGH IRAQ'S JAZEERA DESERT TO SUPPORT ALTERNATING OPERATIONS IN ANBAR AN IN SALAH AD-DIN PROVINCES. RAMADI IS PART OF ISIS'S BATTLE PLAN TO GAIN CONTROL OF CITIES CLOSE TO BAGHDAD. RAMADI IS ALSO A PROVINCIAL CAPITAL ON PAR WITH TIKRIT, MAKING UP ISIS'S LOSS OF THE LATTER IN APRIL 2015.

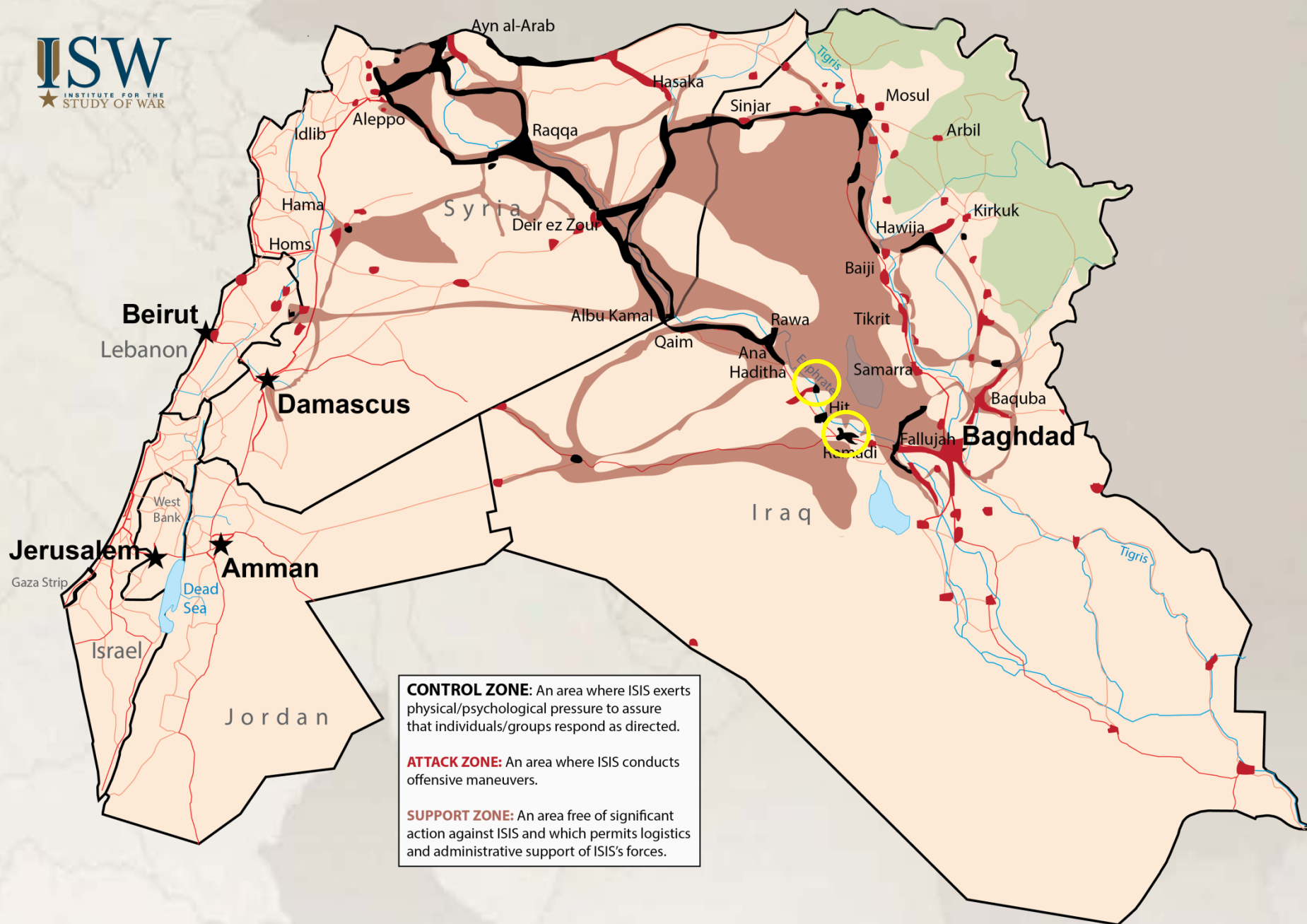
# RAMADI IN CONTEXT OF ISIS'S DEFENSE

## ISIS's "Pinch" Consolidation Maneuvers

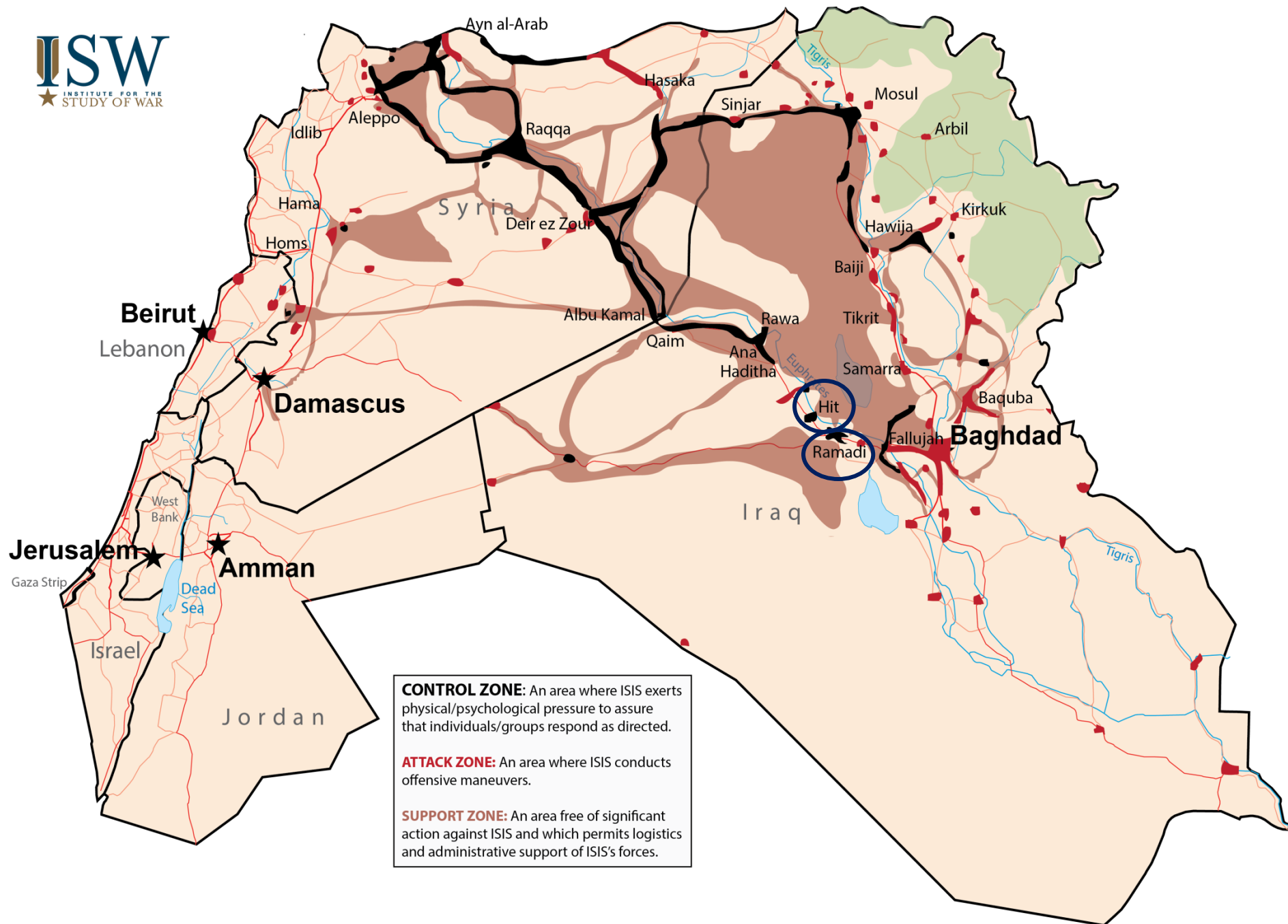


CONTROL OF RAMADI IS ALSO PART OF ISIS'S DEFENSE. ISIS HAS SYSTEMATICALLY DESIGNED BATTLES SINCE JUNE 2015 TO ELIMINATE GAPS IN ITS CONTROL THAT CAN PRESENT FUTURE VULNERABILITIES. ISIS HAS WORKED TO CLEAR RAMADI MULTIPLE TIMES SINCE THE FALL OF MOSUL, PARTICULARLY IN DECEMBER 2014.

# ISIS SANCTUARY: MAY 18, 2015



# ISIS SANCTUARY: MAY 18, 2015



# CONTACT OUR EXPERTS

Media and General Inquiries

John D. Lawrence

Director, External Relations

[jlawrence@understandingwar.org/](mailto:jlawrence@understandingwar.org)

[press@understandingwar.org](mailto:press@understandingwar.org)

202-293-5550, x205

Website: [www.UnderstandingWar.org](http://www.UnderstandingWar.org)

Iraq Blog: [www.UnderstandingWar.org/iraq-blog](http://www.UnderstandingWar.org/iraq-blog)

Syria Blog: [www.UnderstandingWar.org/syria-blog](http://www.UnderstandingWar.org/syria-blog)



Twitter: @TheStudyofWar

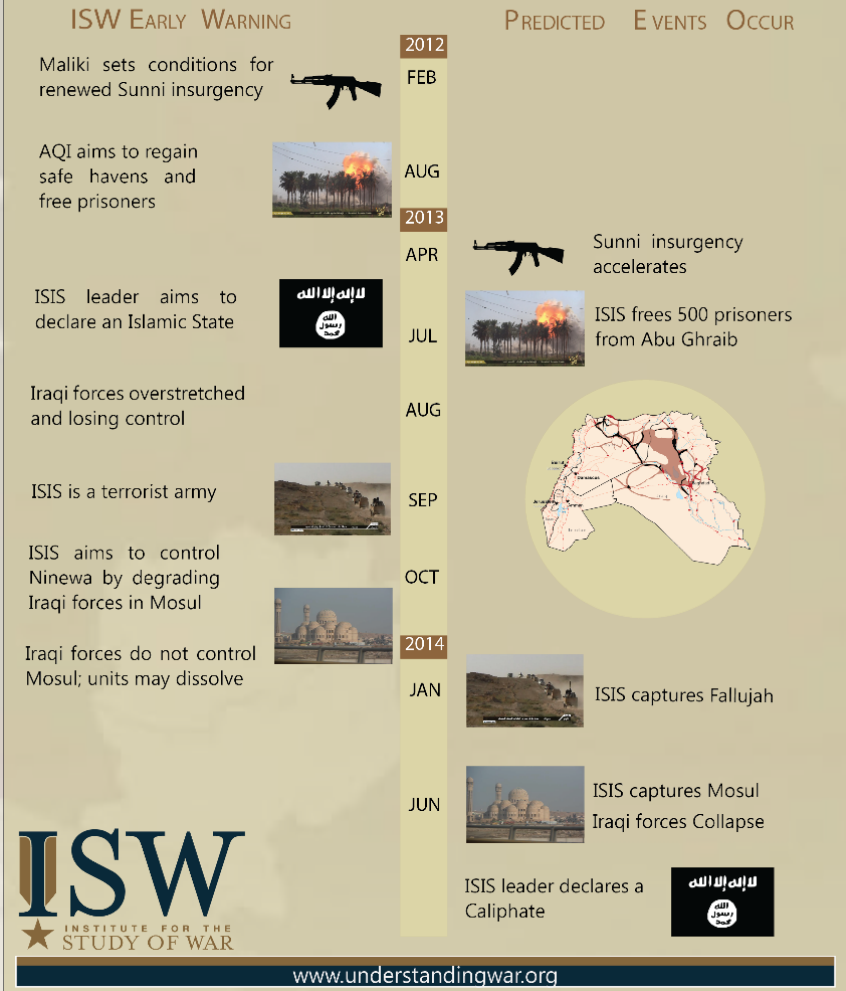


InstituteForTheStudyofWar



Institute for the Study of War

## PREDICTING THE RISE OF THE ISLAMIC STATE



@TheStudyofWar

WWW.UNDERSTANDINGWAR.ORG